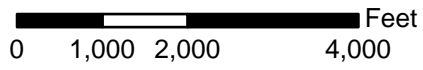



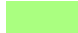


Snowmobile Trails - Des Plaines River Trail

Lake County Forest Preserve District
 1899 W Winchester Road
 Libertyville, Illinois 60048
 847-367-6640
 www.lcfd.org



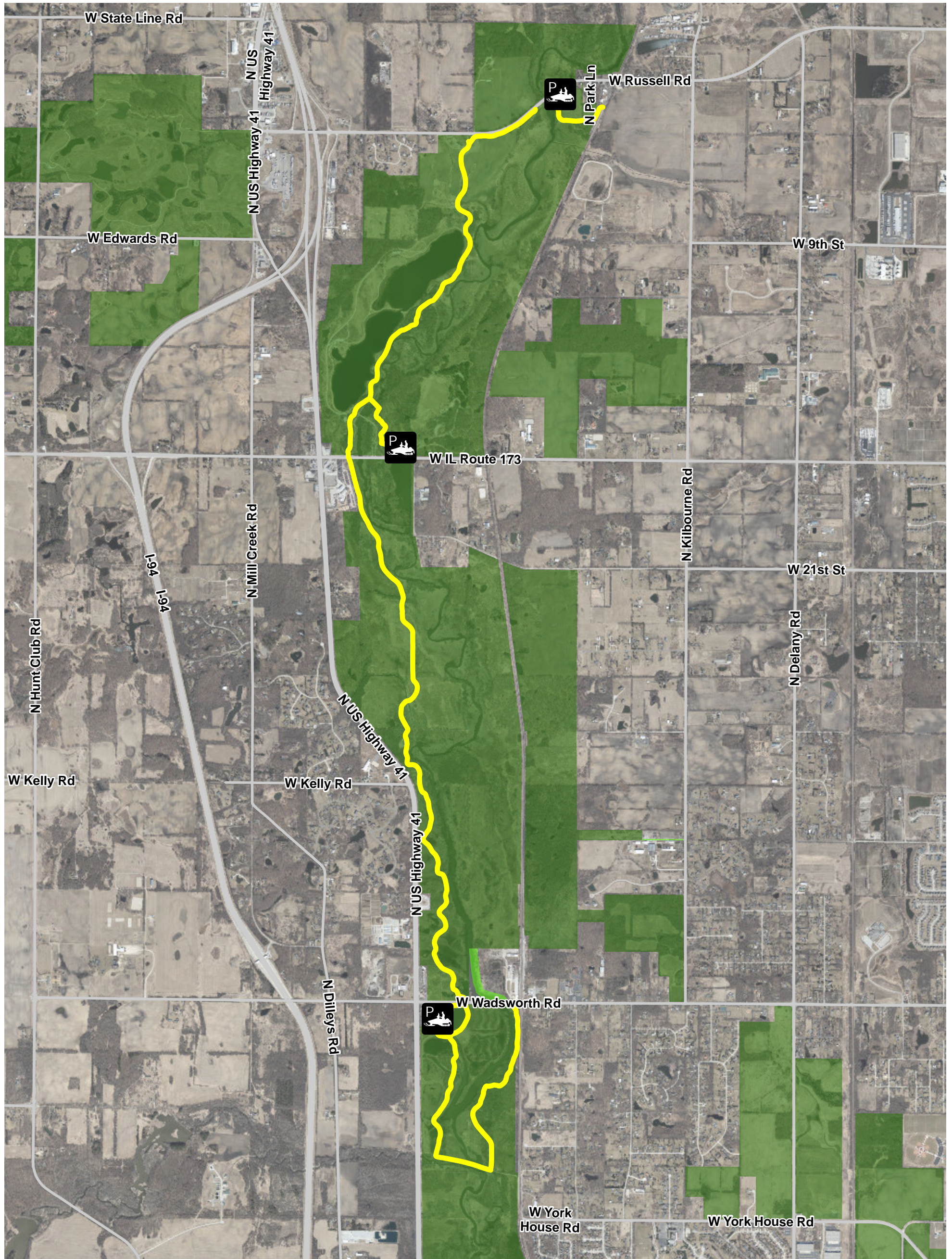
Legend

-  Snowmobile Trailer Parking
-  Snowmobiling Trails
-  Forest Preserve Property
-  Forest Preserve Easement



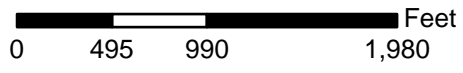
Prepared using information from:
 Lake County Dept. of Information
 & Technology: GIS/Mapping Division
 18 North County Street
 Waukegan, Illinois 60085-4357
 847-377-2373

Map Prepared 15 October 2019




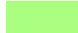


Snowmobile Trails - Grant Woods

Lake County Forest Preserve District
1899 W Winchester Road
Libertyville, Illinois 60048
847-367-6640
www.lcfd.org



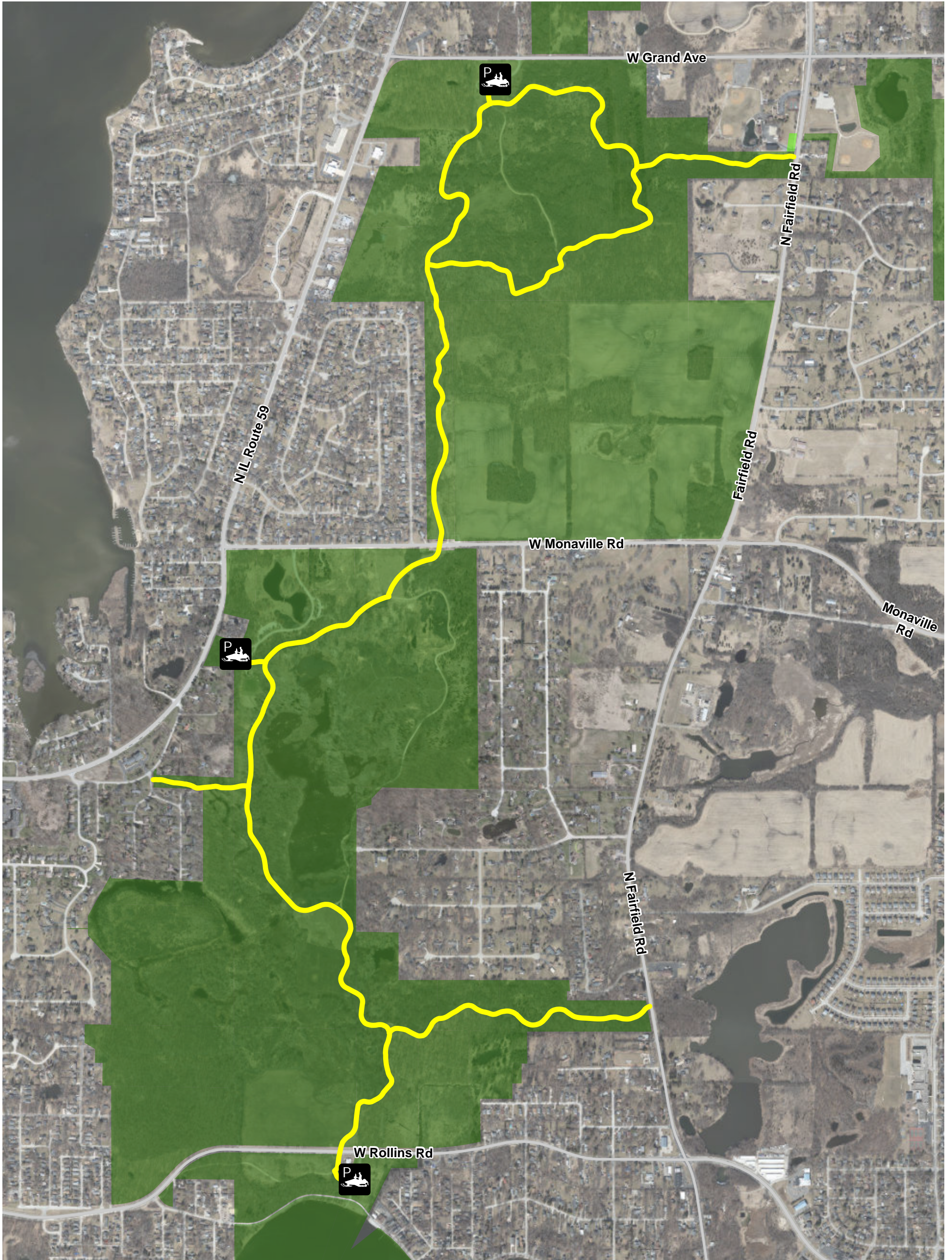
Legend

-  Snowmobile Trailer Parking
-  Snowmobiling Trails
-  Forest Preserve Property
-  Forest Preserve Easement



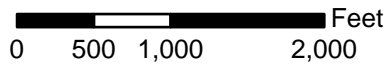
Prepared using information from:
Lake County Dept. of Information
& Technology: GIS/Mapping Division
18 North County Street
Waukegan, Illinois 60085-4357
847-377-2373

Map Prepared 15 October 2019




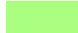


Snowmobile Trails - Lakewood

Lake County Forest Preserve District
1899 W Winchester Road
Libertyville, Illinois 60048
847-367-6640
www.lcfd.org



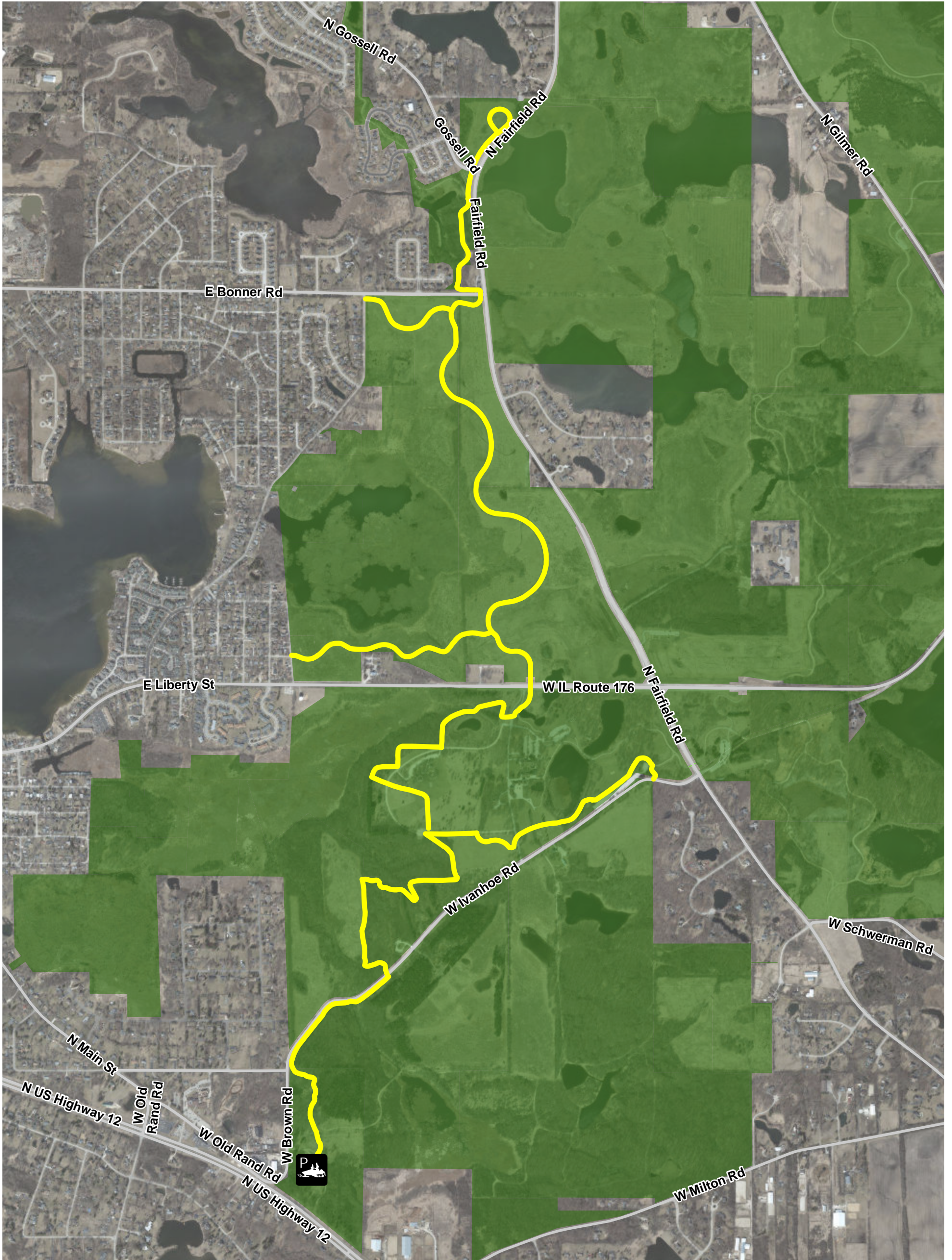
Legend

-  Snowmobile Trailer Parking
-  Snowmobiling Trails
-  Forest Preserve Property
-  Forest Preserve Easement



Prepared using information from:
Lake County Dept. of Information
& Technology: GIS/Mapping Division
18 North County Street
Waukegan, Illinois 60085-4357
847-377-2373



Map Prepared 15 October 2019



Snowmobile Trails - Nippersink

Lake County Forest Preserve District
1899 W Winchester Road
Libertyville, Illinois 60048
847-367-6640
www.lcfd.org

Legend

-  Snowmobiling Trails
-  Forest Preserve Property



Prepared using information from:
Lake County Dept. of Information
& Technology: GIS/Mapping Division
18 North County Street
Waukegan, Illinois 60085-4357
847-377-2373

0 205 410 820 Feet

Map Prepared 15 October 2019

